

THE 2020 PROBLEM

IS YOUR BUSINESS PREPARED? A QUICK GUIDE FROM SYSTEMAGIC

WWW.SYSTEMAGIC.CO.UK



SYSTEMAGIC
DOING IT DIFFERENTLY

WHAT IS THE 2020 PROBLEM?

On the 14th of January 2020 some of the most commonly used Microsoft business software packages will reach their 'end of lives.' This essentially means that Microsoft will no longer continue to support and fix affected software. In a nutshell, if your business operates on any of the systems due to expire then come next January you'll be faced with numerous complications that will impact your organisation massively.

The 2020 Problem has potential to be very disruptive for 1 in 3 businesses who rely on using Microsoft software daily. We're urging our clients to act now which is why we've created this e-book which highlights how to check what version of Windows you're currently running and what proactive steps to take if the software you're using is in need of an upgrade!



WHAT SOFTWARE WILL BE AFFECTED?

In 2020 the following software will reach its end of life:

- **Windows 7**
- **Office 2010**
- **Exchange 2010**
- **Small Business server 2011**
- **Windows server 2008**

Once the packages stop being supported by Microsoft it means the software will no longer benefit from updates or security patches and will eventually become incompatible with other software and programmes (for example the latest version of Sage.)

Using out of date software means that your business will be breaching GDPR regulations and no longer be compliant.

If your business is one of the hundreds of thousands that depend on this software you'll no longer be fully secure and at much greater risk of being hacked by cyber-criminals!

WHAT VERSION OF WINDOWS AM I RUNNING?

If your business is using any of the software due to expire, then you need to act now. If you're not sure what version of Windows you're currently running then it's super simple to identify which version of Windows is installed on your computer. All you need to do is follow these four steps.

1
CLICK START ON YOUR DESKTOP

2
ENTER "COMPUTER" IN THE SEARCH BAR

3
RIGHT CLICK 'PROPERTIES'

4
THE VERSION OF WINDOWS YOU'RE RUNNING WILL DISPLAY

WHAT VERSION OF WINDOWS AM I RUNNING?

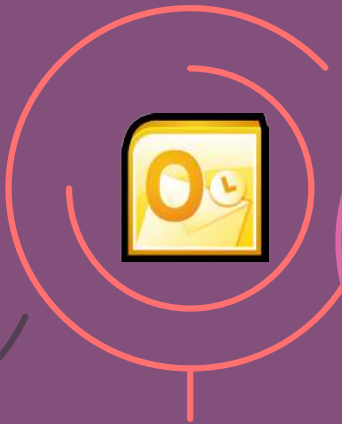
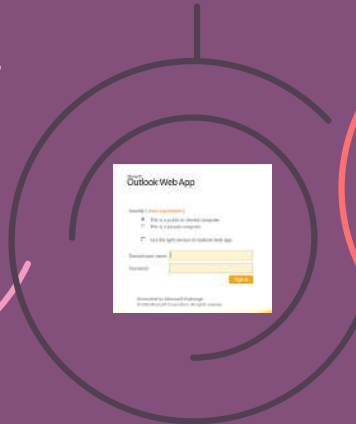
Alternatively you can check by simply taking a look at our visual guide below. Do you see these icons anywhere on your interface? If so, you will no longer receive security updates from Microsoft and you need to take action.

**EXCHANGE 2010
WEBMAIL LOGIN**

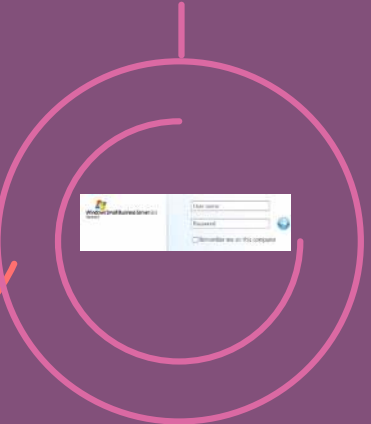
**SMALL BUSINESS SERVER
LOGIN SCREEN**



WINDOWS 7 START BUTTON



**IS YOUR OUTLOOK 2010
ICON YELLOW OR BROWN?**





RUNNING WINDOWS 7?

If your business is currently running the affected versions of software, the only solution is to upgrade.

We're urging all of our clients to replace their Windows 7 computers long before the support expires and upgrade to Windows 10 software. It's important to remember upgrades can take months to implement accordingly therefore this is definitely something you don't want to leave until the last minute to roll out.

Having un-supported and un-patched infrastructure is asking for trouble and you expose your business to many threats if you're no longer secure. Consequently, it's vital you upgrade to a modern operating system such as Windows 10 which can provide the latest security updates to help keep your data safe and secure.

Upgrading software in plenty of time and not just before its end of life is critical to keep the operations of your business under control.

If you're concerned about keeping your data safe or want more information on how to protect your business from the 2020 problem get in touch with us today.

BENEFITS OF UPGRADING TO WINDOWS 10..

1

START UP SPEED

Windows 10 is designed to start quicker than any previous operating system.

On an average Windows 10 spec computer it'll start up 4x faster than Windows 7.

2

PERFORMANCE

Software engineering across the Windows 10 build has enabled it to exceed the performance levels of both Windows 7 and 8.

3

SECURITY

Windows 10 has been developed to be more secure and include more security patches with built in security package 'Windows Defender'

4

UPDATES

The software offers continuous updates to improve functionality, security and reliability of Windows 10.

5

USER-FRIENDLY INTERFACE

Windows 10 takes the best parts of Windows 7 and 8 to develop an easy to use interface allowing the best experience.

6

OPTIMISED FOR THE CLOUD

The software has been designed to intergrate and support cloud services like Office 365 and Azure.

#DOINGITDIFFERENTLY

WWW.SYSTEMAGIC.CO.UK | 01225 426 800 | INFO@SYSTEMAGIC.CO.UK

